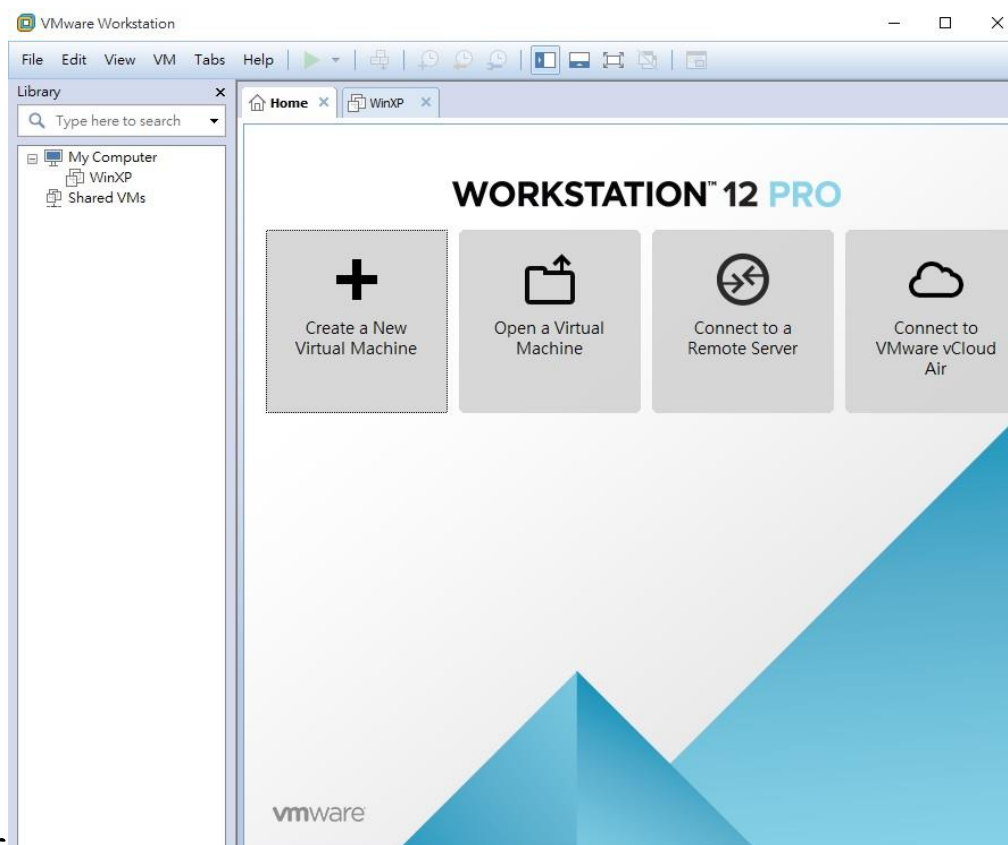
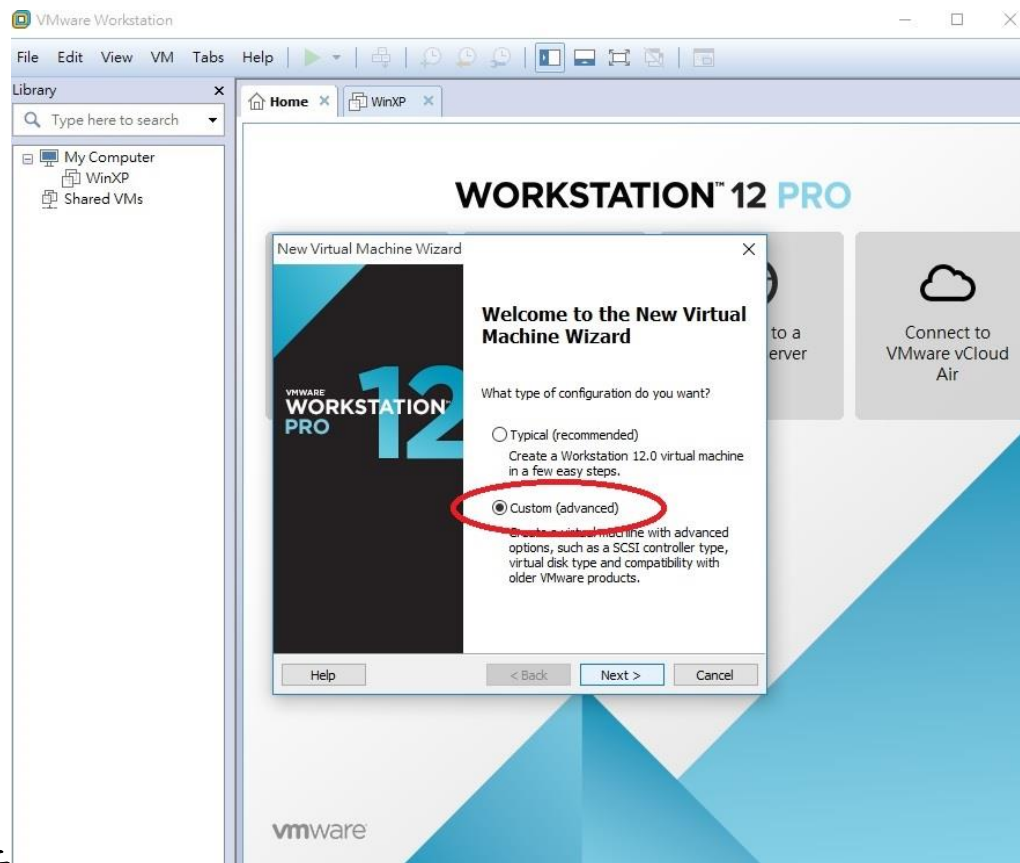


利用 VMware Workstation 建立可轉入 vSphere VM 操作步驟

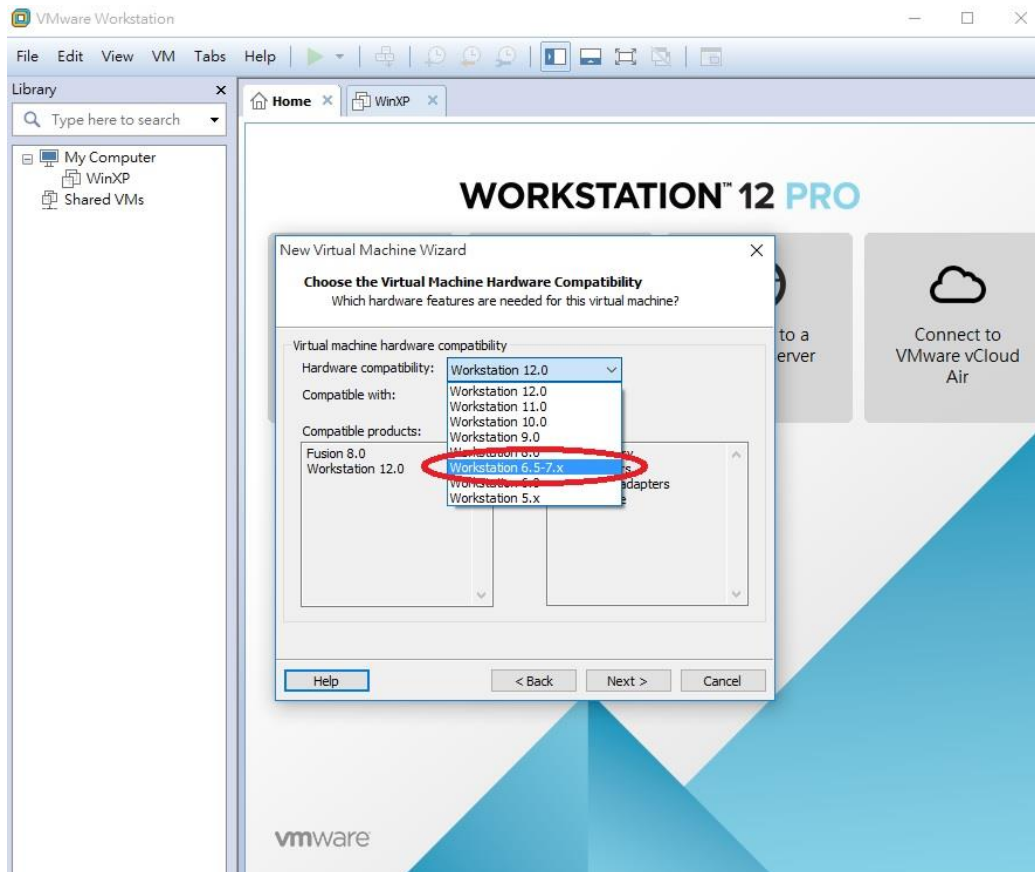
步驟一



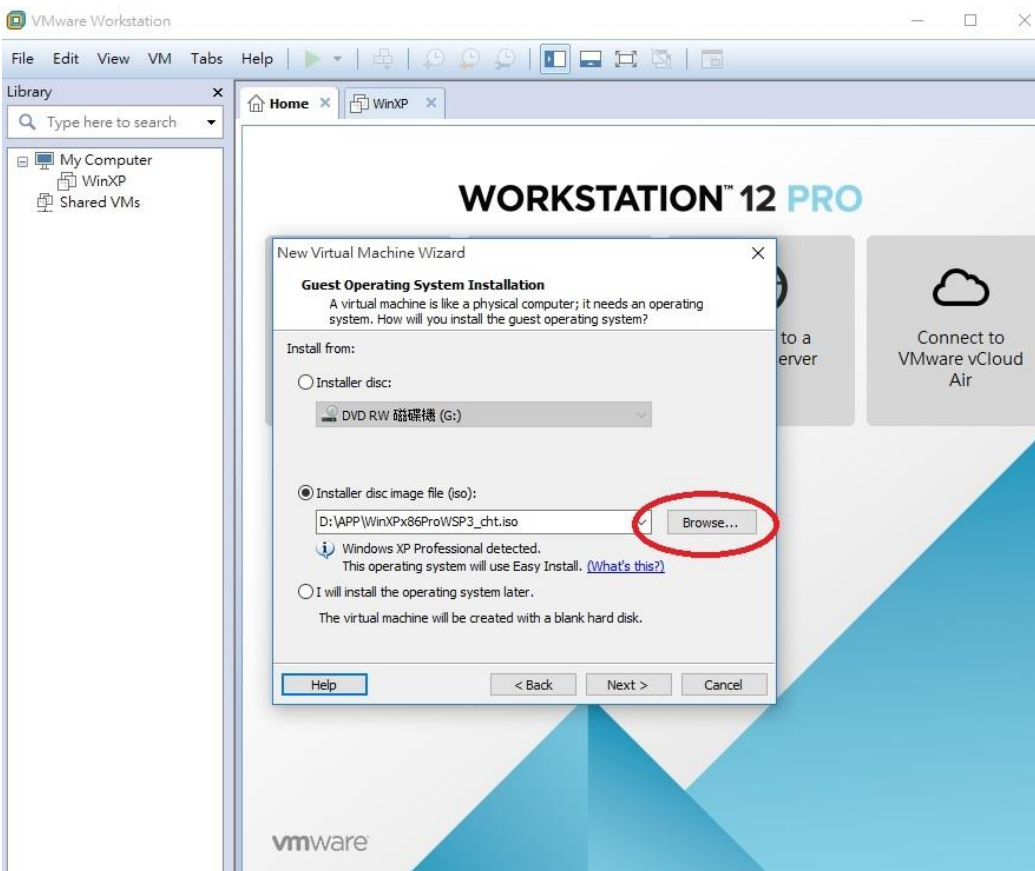
步驟二

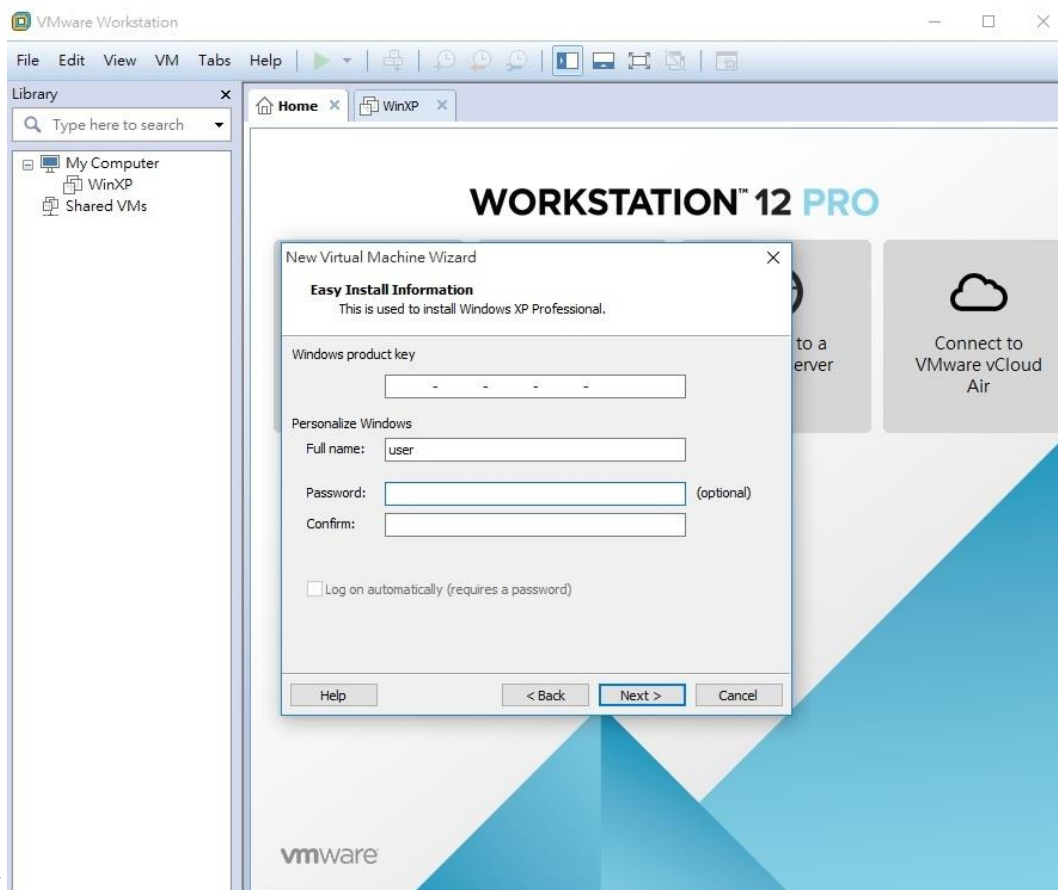


步驟三

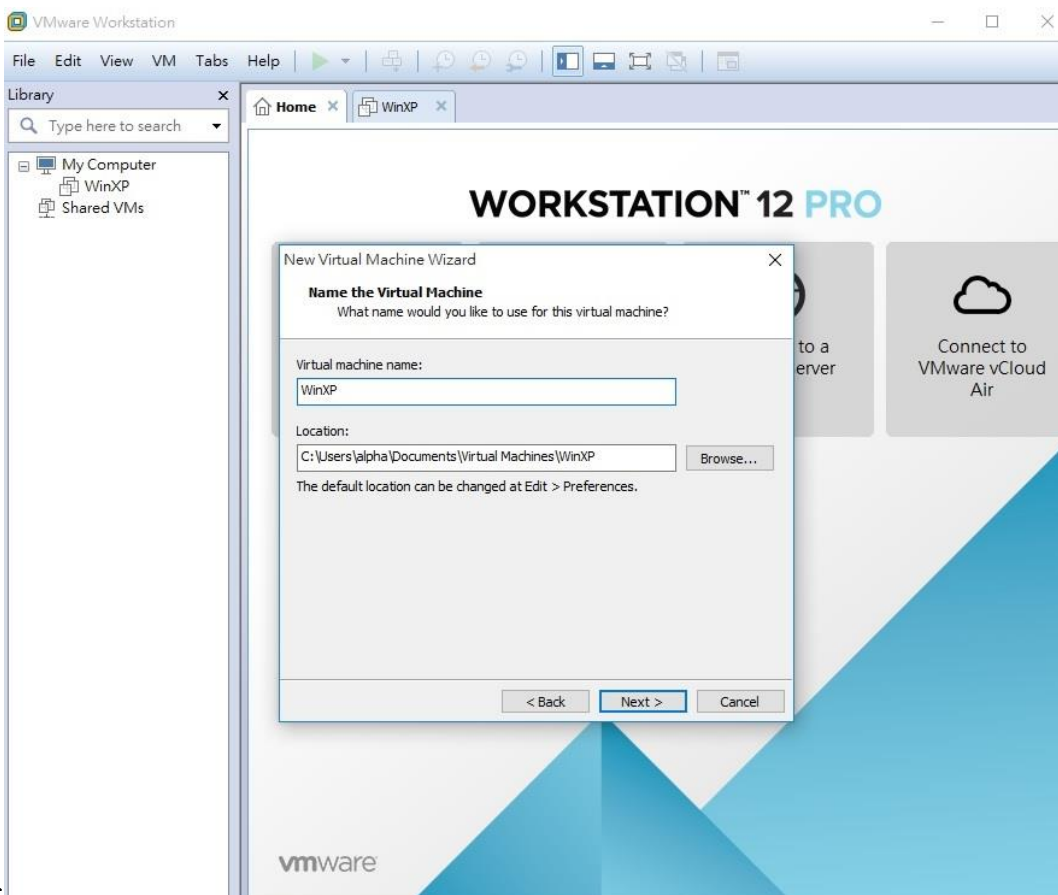


步驟四



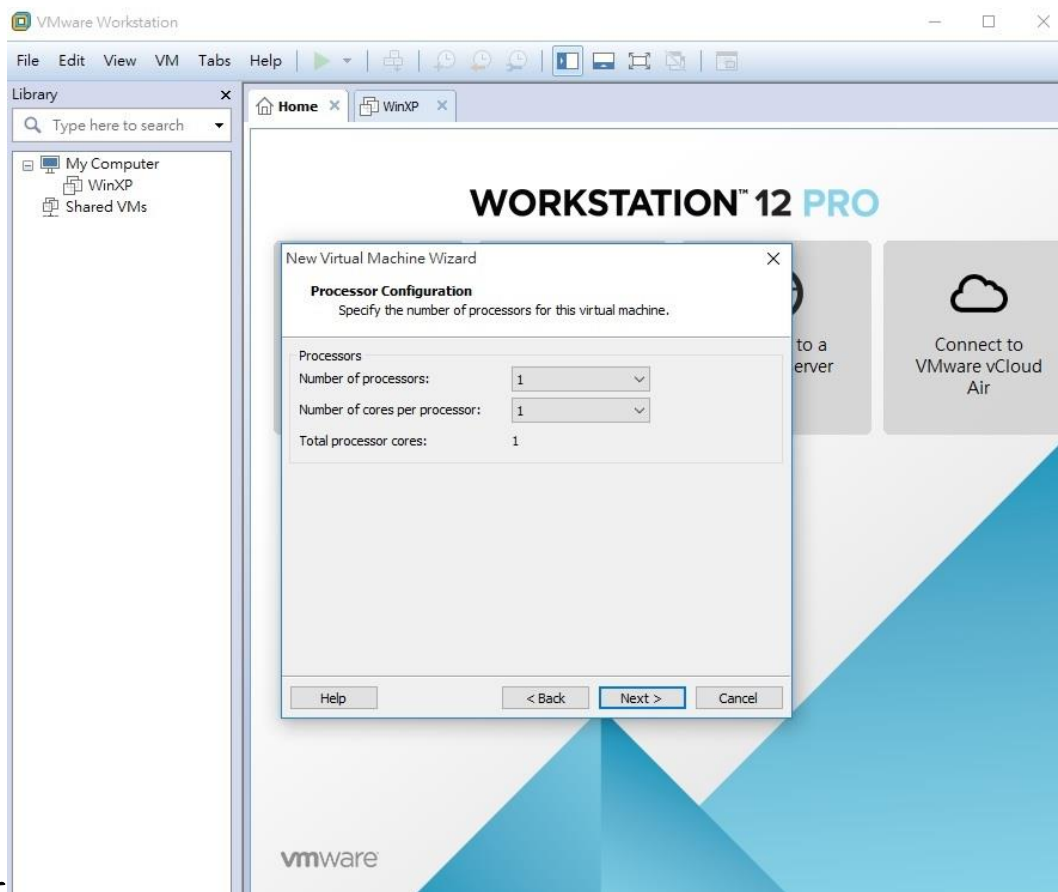


步驟五

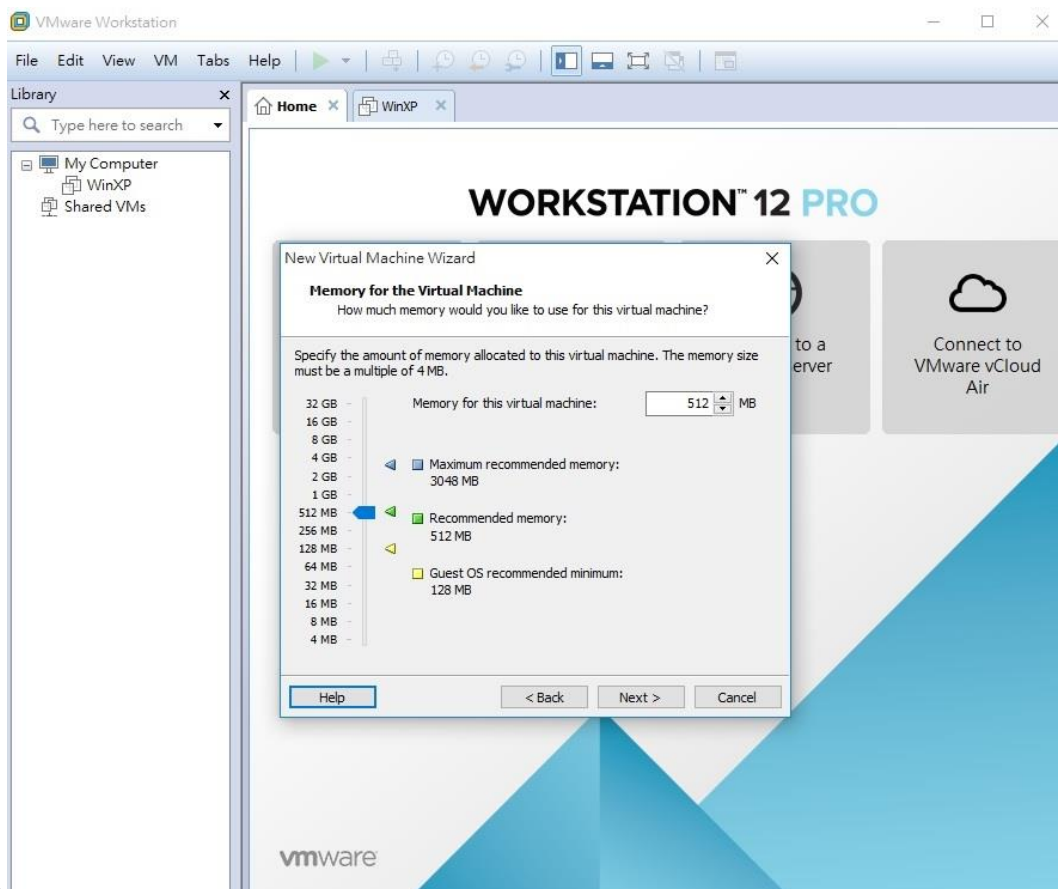


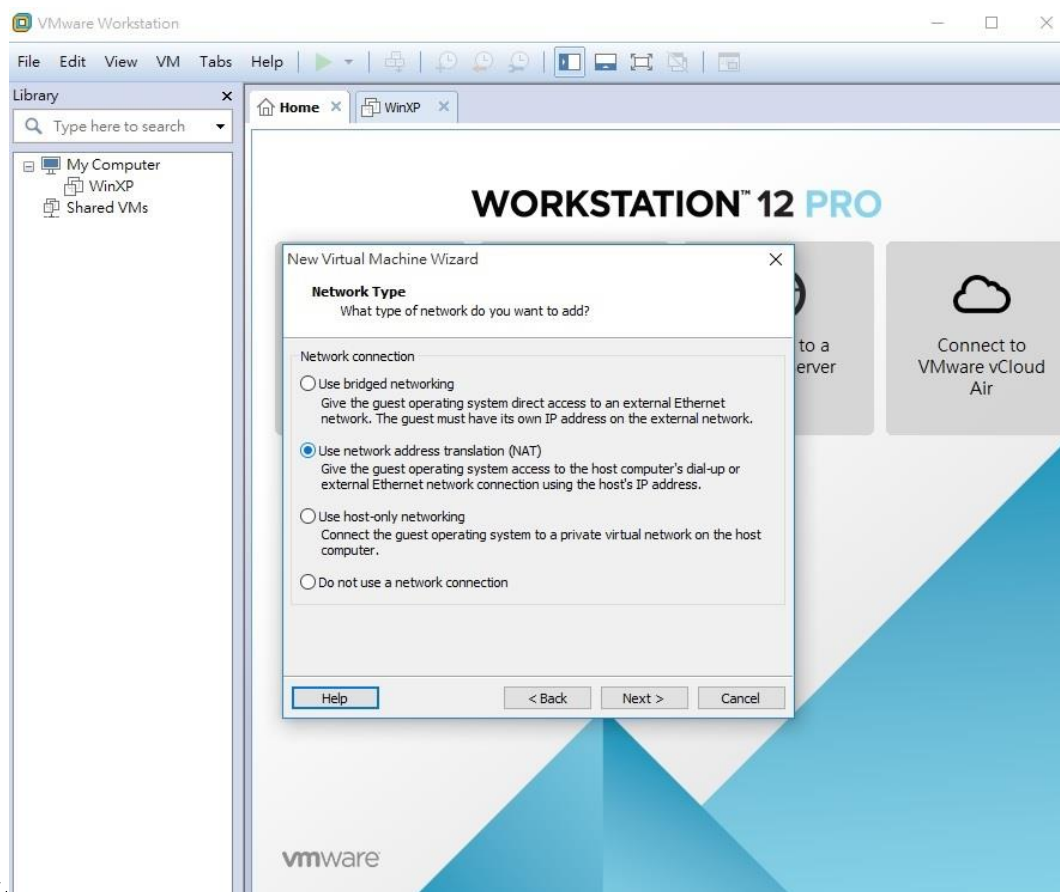
步驟六

步驟七

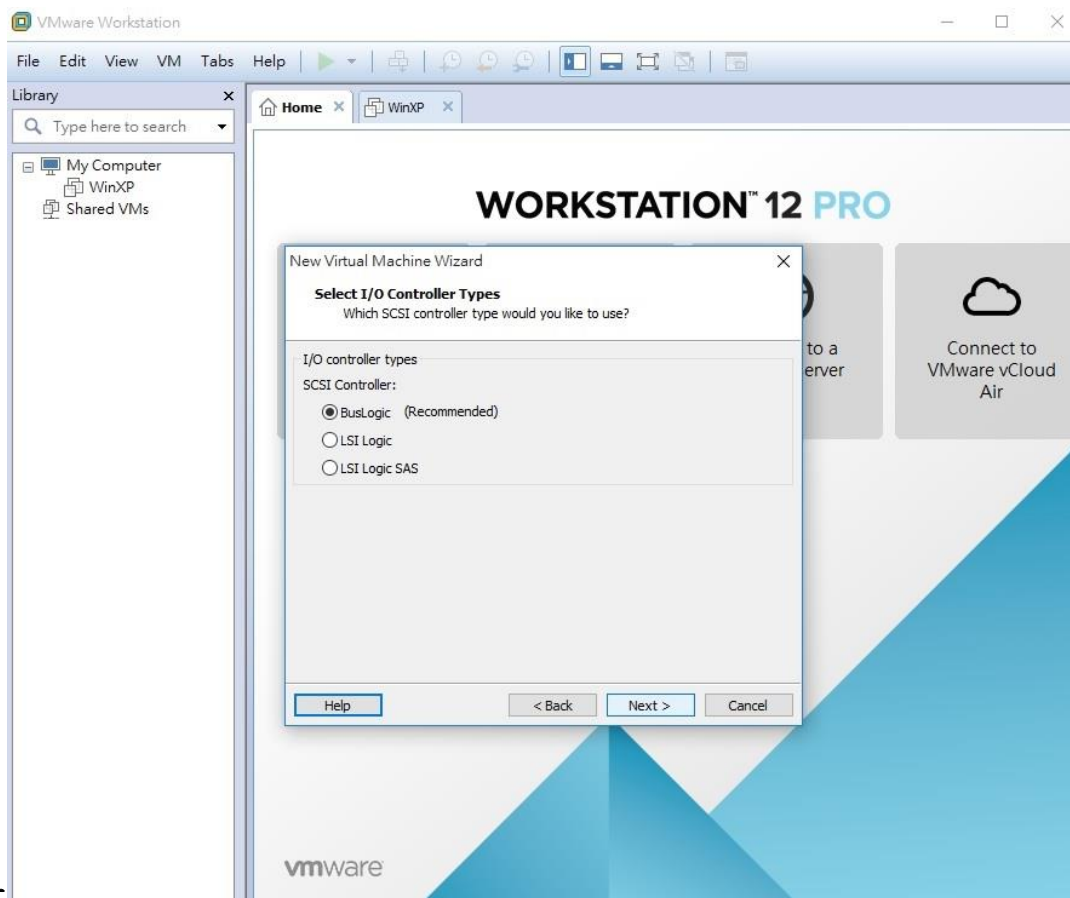


步驟八



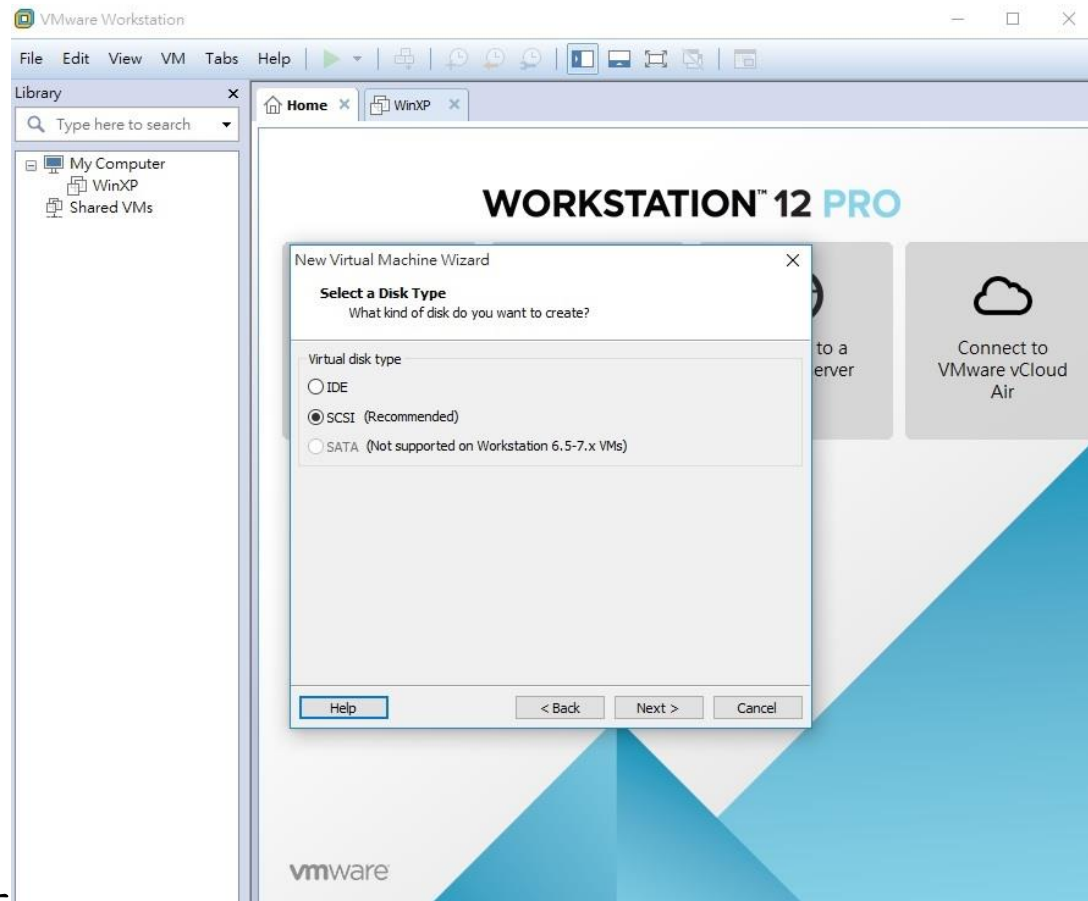


步驟九

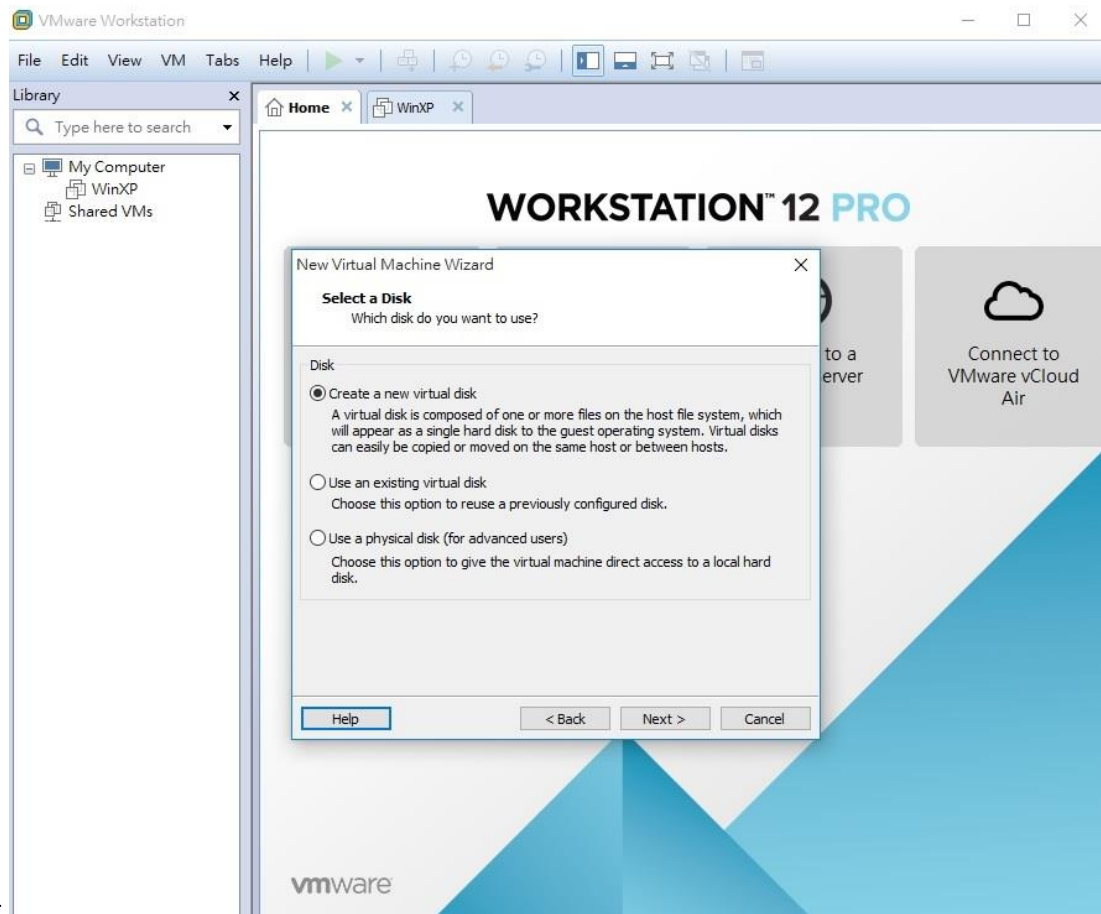


步驟十

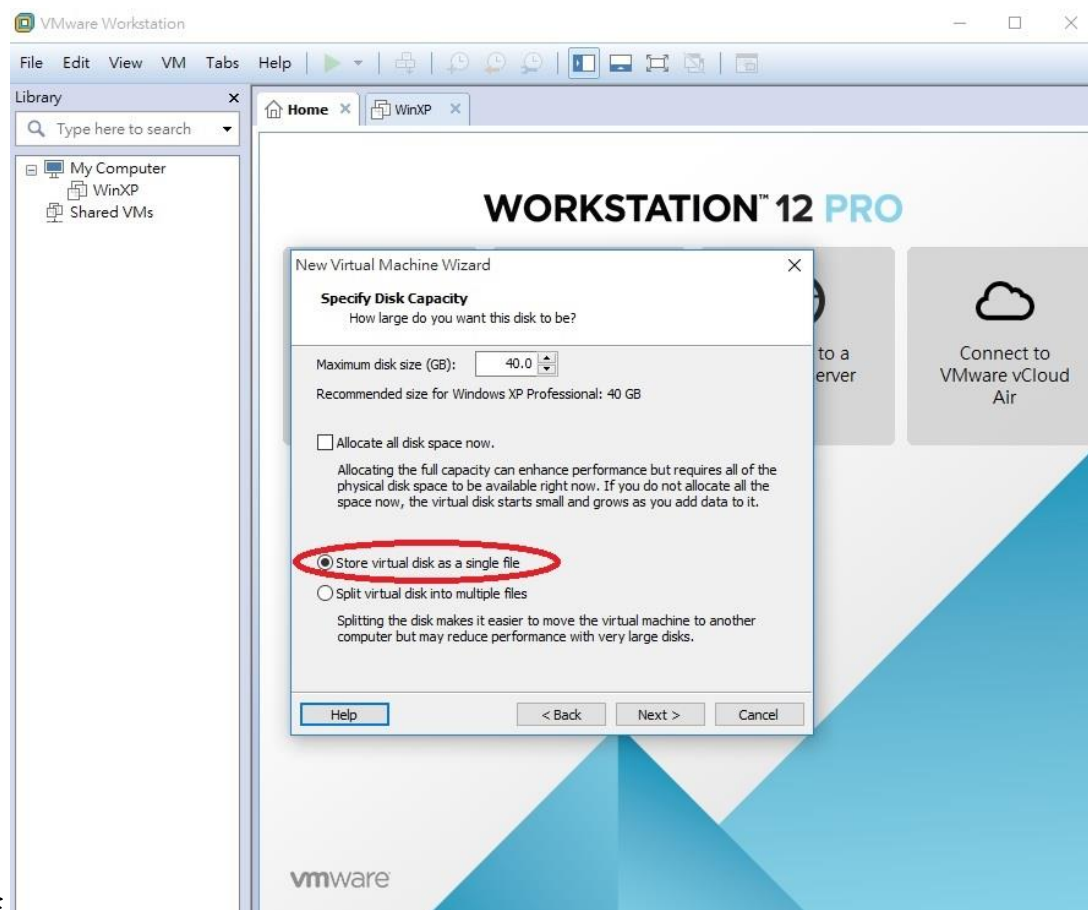
步驟十一



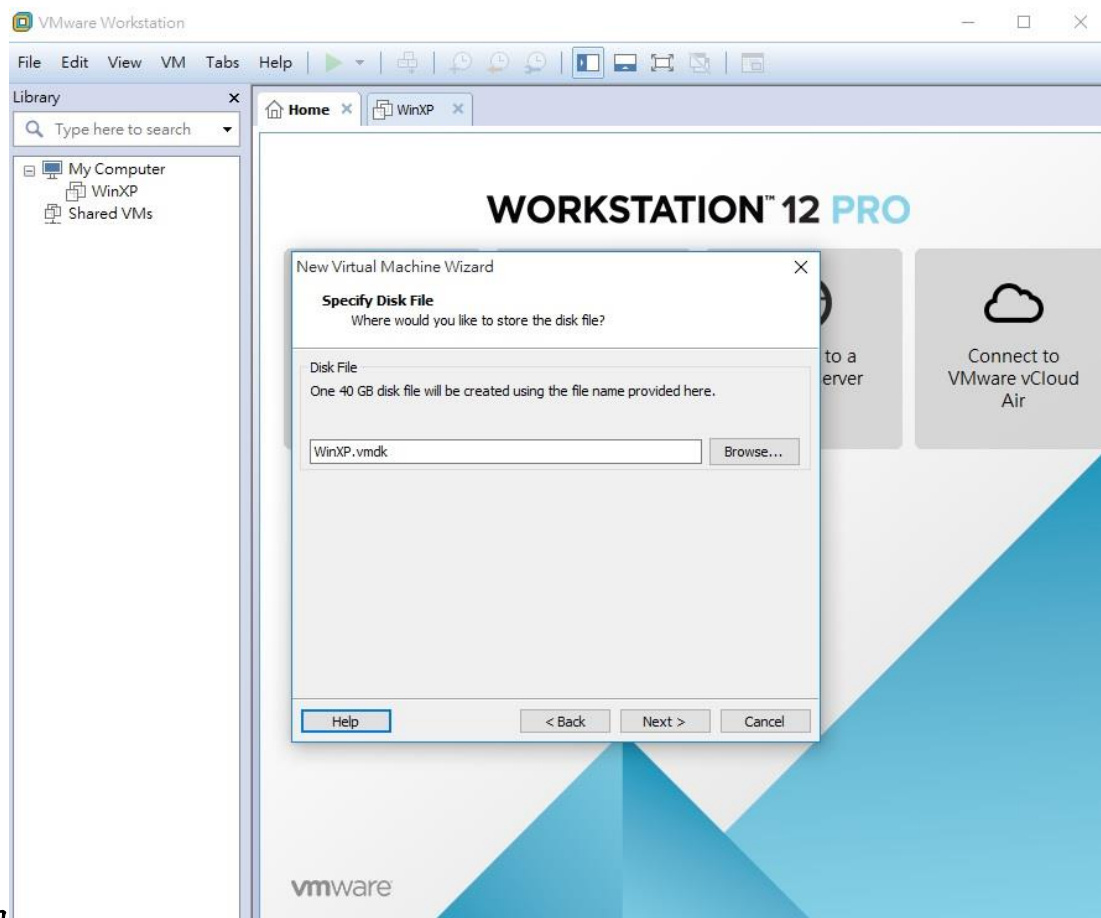
步驟十二

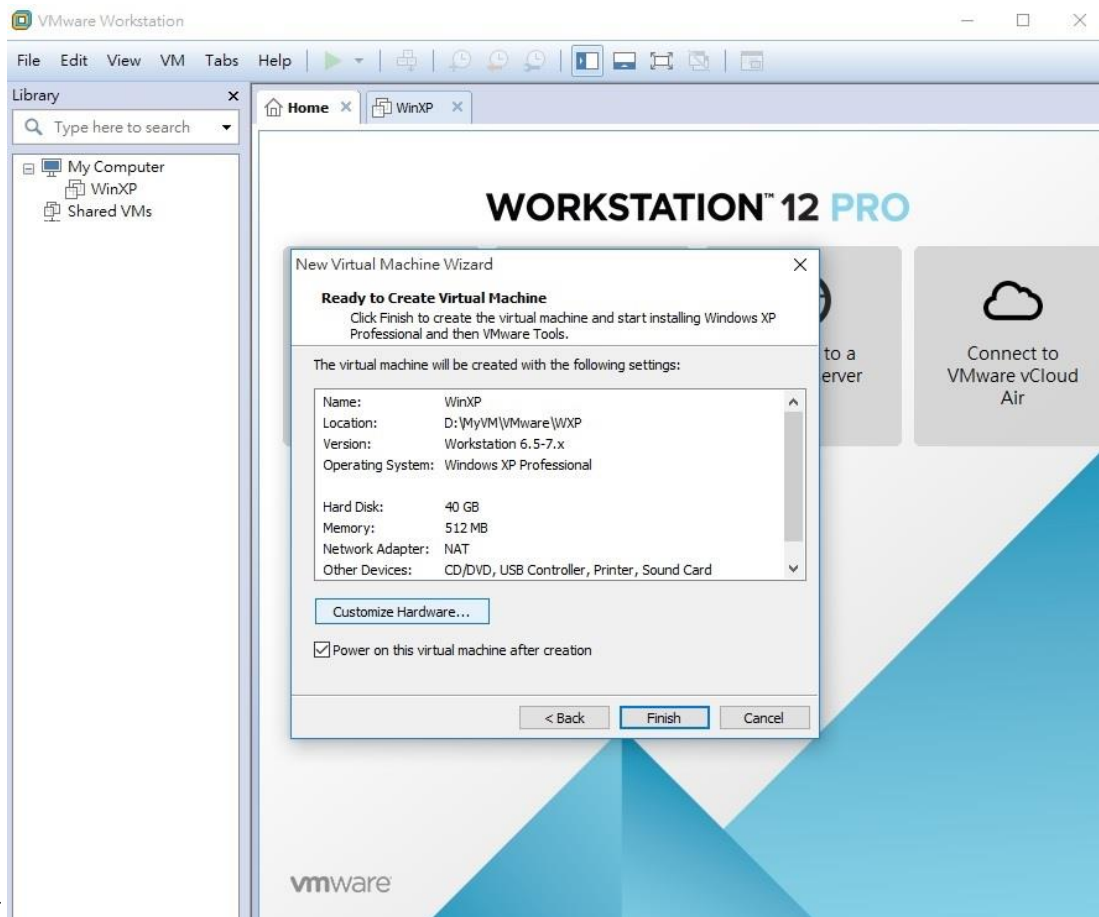


步驟十三

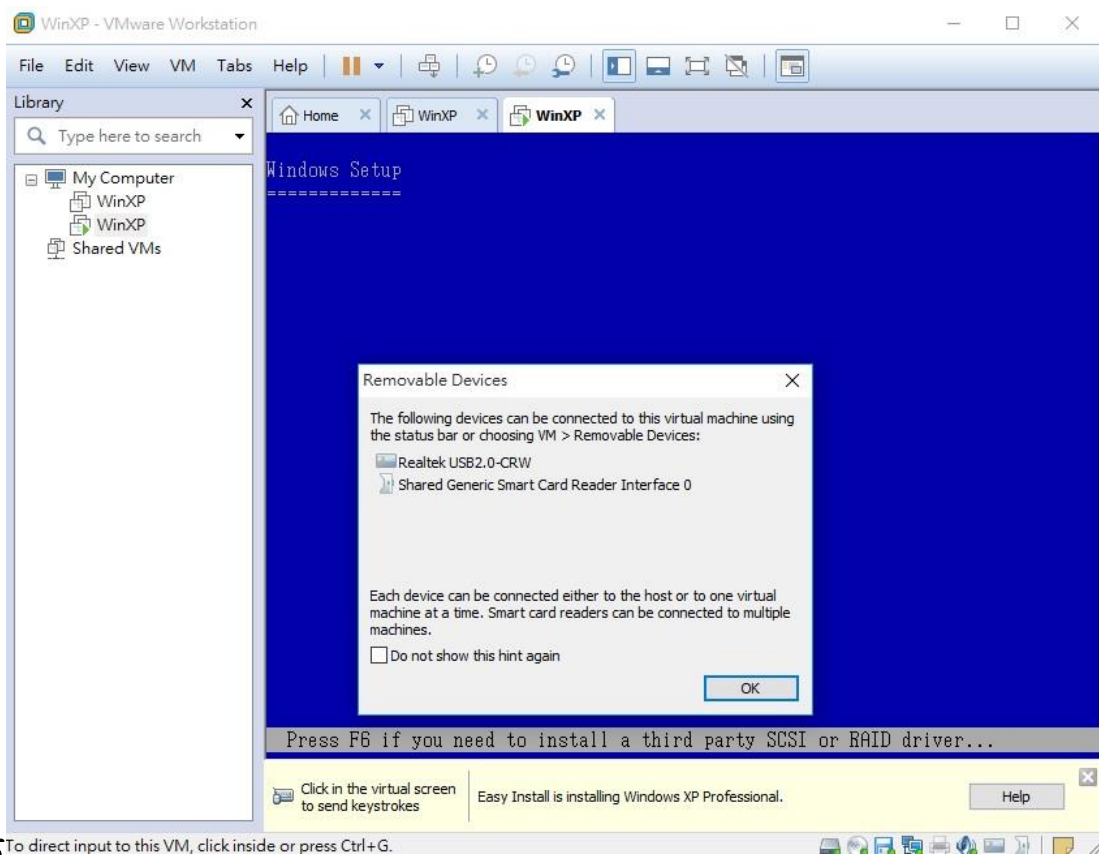


步驟十四



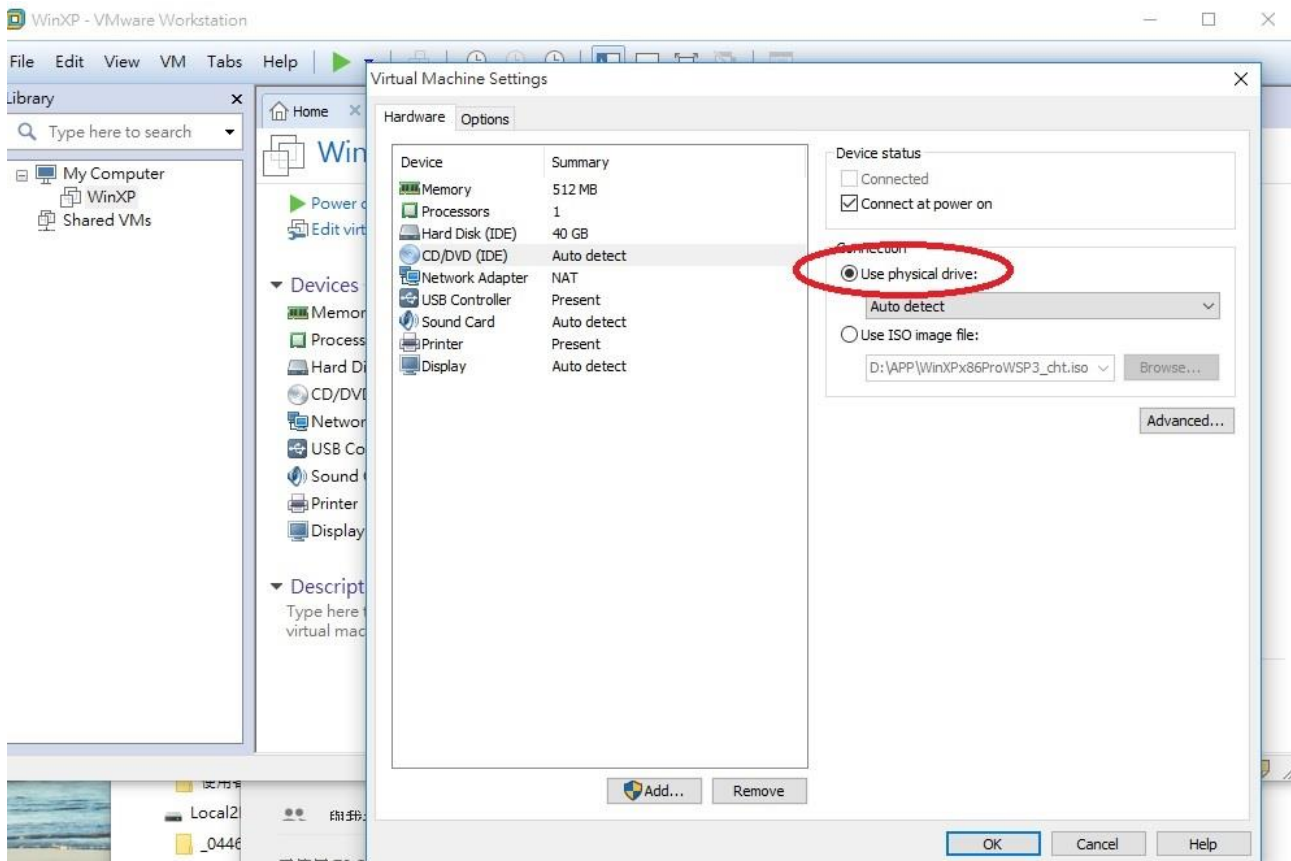


步驟十五

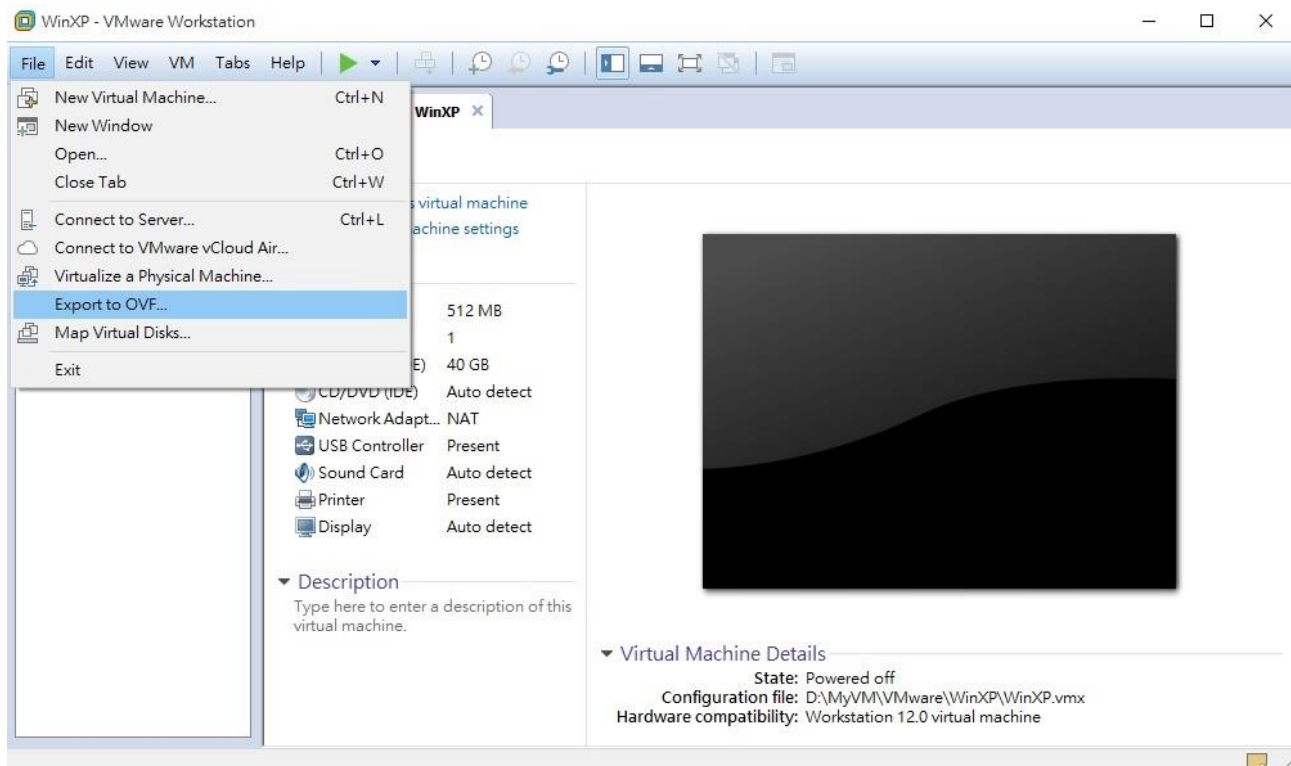


步驟十六 To direct input to this VM, click inside or press Ctrl+G.

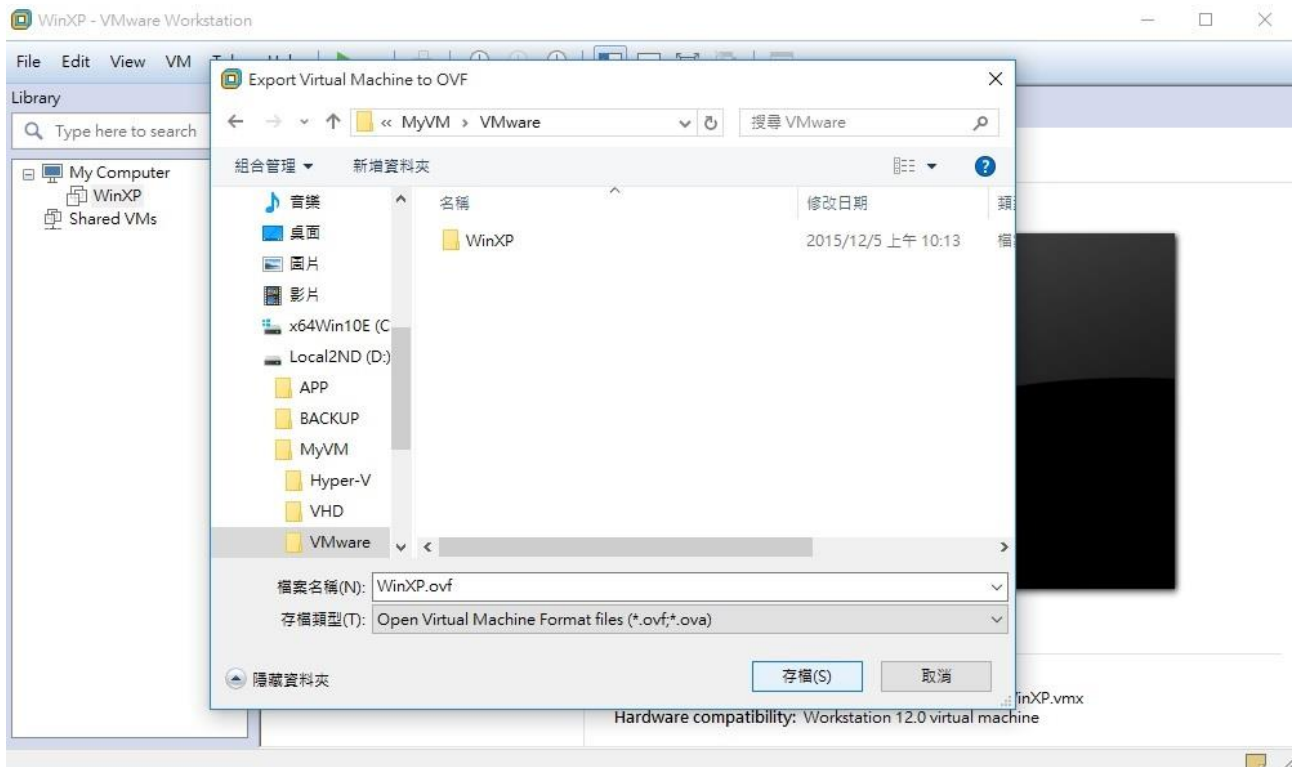
步驟十七



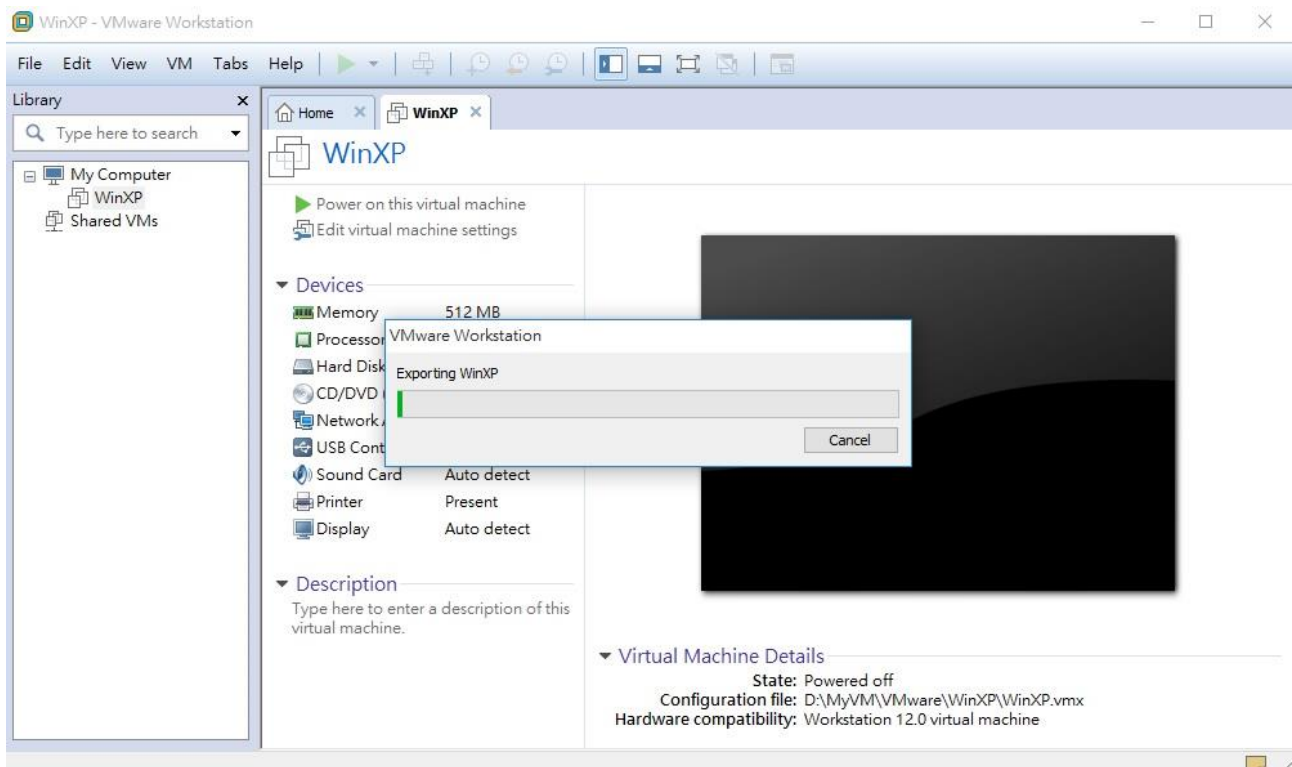
步驟十八



步驟十九



步驟二十



步驟二十一

